



2020 ANNUAL
REPORT

Y.O.U.
YOUTH & OPPORTUNITY UNITED

DEAR FRIENDS,

We are living through times like no other. Amidst these challenges, I have never been more proud of the work of Y.O.U. as we pivoted to serve youth and families continuously throughout the pandemic. Y.O.U. was uniquely positioned to respond to this crisis based on our deep understanding of youth needs, collaborative partner relationships, and solid financial footing. We continued our comprehensive focus on academic, social, and emotional needs through enhanced academic support, connections while apart, and increased mental health support.

In just the period of March through June 2019, the number of youth and families served through our case management and counseling services grew 365% from the prior eight months. Y.O.U. clinicians are supporting more youth than ever, and our Out-of-School-Time Programs went virtual with staff providing engaging, enriching, and experiential programming in new formats.

Y.O.U. has deepened our work as an organization and board to ensure that we fully understand and address the effects of systemic racism. We are examining our programs and policies with an anti-racist and equity lens, to enhance positive youth outcomes.

In July, Y.O.U. welcomed Craig Lynch as Chief Executive Officer. Everyone was excited to work with this seasoned professional who has spent his career in education and social services. With Craig in place, the organization continues its historical leadership in the youth development field while adapting to best meet the needs of youth and families during these challenging times. Y.O.U. will continue to lean into our partnerships, respond to new and expanding needs, view youth holistically, and seek excellence in our support of post-secondary and life success for youth.



Letitia Mann
President, Board of Directors

FROM Y.O.U.'S NEW CEO

Thank you for your generous and enthusiastic support of Y.O.U. and the warm welcome I have received since joining the organization. Like many organizations, Y.O.U. was forced to adapt our traditional programming to best serve youth and families while our schools shut down due to the pandemic.

The year has certainly brought its challenges including a pandemic that continues to disproportionately affect underserved communities. In the face of that challenge, our response has been guided by agility, resilience, and creativity. I am proud of the ways in which Y.O.U. and our community have responded to meet our youth's emerging needs.

I look forward to partnering with you to deliver even more high impact support and services to our youth and families.



Craig Lynch
Chief Executive Officer

1,615

Youth and young adults served by
Y.O.U. last year in our community.

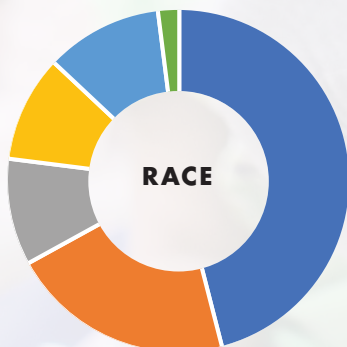
Y.O.U. works to close the opportunity gap and prepare youth for post-secondary and life success.

The majority of youth served are low-income. Youth were served through comprehensive out-of-school-time programming, community-based services, and 5th ward programming at Y.O.U.'s headquarters.

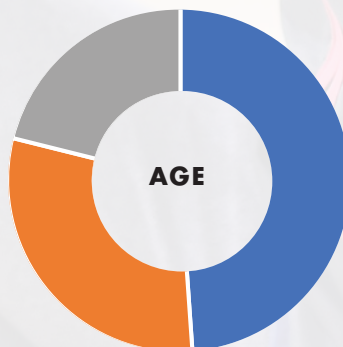
Youth served by Y.O.U. include youth of color, LGBTQ+ identifying youth, immigrants, and housing insecure youth.



BY THE NUMBERS



46%	Black/African American
21%	Latinx
11%	white
10%	multiracial
10%	Asian
2%	other



44%	elementary school
27%	middle school
19%	high school and young adults

Y.O.U. IN 2020

“ By participating in Y.O.U., my child improved on her school activities like homework and found new ways to do school activities. She gained a lot of support and learned how to trust herself.

Caregiver of Y.O.U. youth

COMBATING SUMMER LEARNING LOSS

NWEA (Northwest Evaluation Association) conducted a national review comparing spring to fall scores on their standardized MAP test. They found that students drop an average of 3-5 points over the summer with summer learning loss increasing through elementary and middle school. Y.O.U. reviewed MAP test scores for elementary and middle school youth who took spring and fall MAP tests in 2019.

- On average, Y.O.U. youth experienced gains in both math and reading scores from spring to fall 2019.
- Y.O.U. youth who attended 20 days or more showed higher gains in scores than those who attended fewer days.

Y.O.U.'S UNIQUE APPROACH

- Relationships are at the center of all programming
- Experiential, project-based, and youth-led
- Asset-based, trauma-informed, culturally competent, and equitable
- Deeply engaged partners to ensure holistic services
- High expectations, high support



97%

of youth report that they can work well with others to reach a common goal

OUR FRAMEWORK & APPROACH

Y.O.U. advances youth success and builds youth resilience through programs that foster academic, social, and emotional growth. These include school-based and community-based programs and services.

Y.O.U. provides a comprehensive continuum of Out-of-School-Time (OST) Programs from 3rd through 12th grade, partnering with 11 schools and 4 school districts. Family engagement and clinical services are fully integrated into OST Programs. The clinical services Y.O.U. Youth & Family Counselors provide include case management and individual, family, and group therapy.

Y.O.U.'s OST Programs are built within the developmental framework Foundations for Young Adult Success by the University of Chicago Consortium on School Research. Within this framework, Y.O.U. carefully designs and selects tailored program components to engage youth along a path of exposure, exploration, and experience.

STEM (Science, Technology, Engineering, and Math) opportunities at Y.O.U. are just one example of how programming deepens as youth move along this

continuum. Elementary youth learn coding basics. Middle schoolers can participate in more challenging First LEGO League coding and robotics projects. By high school, youth are utilizing Y.O.U.'s Makerspace to engage in projects ranging from complex circuitry to drone-making.

TRANSITIONS ARE KEY

Y.O.U.'s Level Up and Highway to High School support 5th and 8th graders, respectively, each spring before transitions to middle and high school. Peer is Y.O.U.'s comprehensive summer bridge experience for rising 9th graders.



EXPOSURE

Elementary School
Grades 3–5



EXPLORATION

Middle School
Grades 6–8



EXPERIENCE

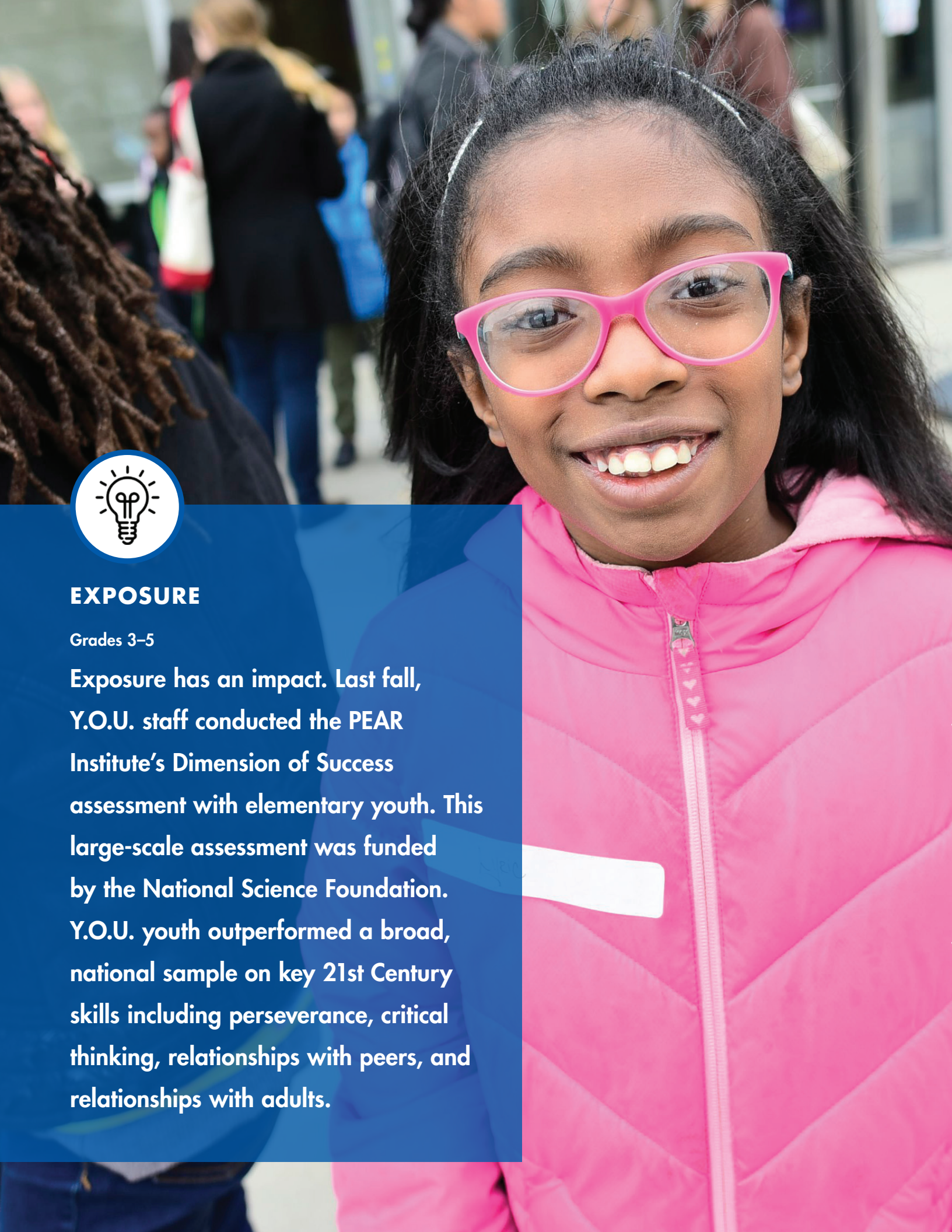
High School
Grades 9–12



EXPOSURE

Grades 3–5

Exposure has an impact. Last fall, Y.O.U. staff conducted the PEAR Institute's Dimension of Success assessment with elementary youth. This large-scale assessment was funded by the National Science Foundation. Y.O.U. youth outperformed a broad, national sample on key 21st Century skills including perseverance, critical thinking, relationships with peers, and relationships with adults.



ELEMENTARY SCHOOL

Y.O.U.'s Elementary OST Program provides a learning ground and solid foundation for youth in 3rd through 5th grades. Through engagement in collaborative hands-on learning and exposure to unique enrichment experiences, youth begin to develop competencies in self-awareness, self-management, and social relations.



SCHOOLS

Dawes, Edison, Oakton, Walker, and Washington Elementary Schools

PROGRAM SPOTLIGHTS

Y.O.U. Basketball League

Y.O.U. partnered with Hot Shots Sports to develop a unique curriculum that is sports-based and builds social-emotional skills. Youth learned fundamental basketball skills and techniques from Hot Shots Sports coaches with complementary social-emotional skills incorporated by Y.O.U. staff each week. Participants learned how to build self-confidence through practice drills, learned to communicate effectively on the court during stressful moments, and regularly explored the importance of cooperation and relationship building among a team. Y.O.U. also introduced a cross-site basketball league where youth traveled to other Y.O.U. elementary sites to play games in front of enthusiastic crowds.

Wild About Nature

As part of a robust virtual summer program, Wild About Nature used the natural world to teach science, ecology, and health in fun, engaging ways. Hands-on projects incorporated outdoor exploration and used both materials found in nature as well as repurposed man-made materials to learn about natural processes, ecosystems, and types of energy. Youth re-sprouted crops including green onions and strawberries, created non-toxic paints and natural paint brushes, and built solar-powered night lights. Youth embraced personal environmental responsibility and identified means to lighten their carbon footprint and care for nature.

MIDDLE SCHOOL

Y.O.U.'s Middle OST Program centers on engaging and empowering youth in 6th through 8th grades through exploration of new ideas and experiences that provide space to learn and grow. With a focus on building youth confidence and self-efficacy, encouraging their independent thought, and celebrating their social awareness and identity, youth are better able to navigate the increased academic and social challenges of middle school and be well-positioned for success in high school and beyond.

SCHOOLS

Chute and Nichols Middle Schools, King Arts Literacy & Fine Arts School, Lincoln and Old Orchard Junior High Schools

PROGRAM SPOTLIGHTS

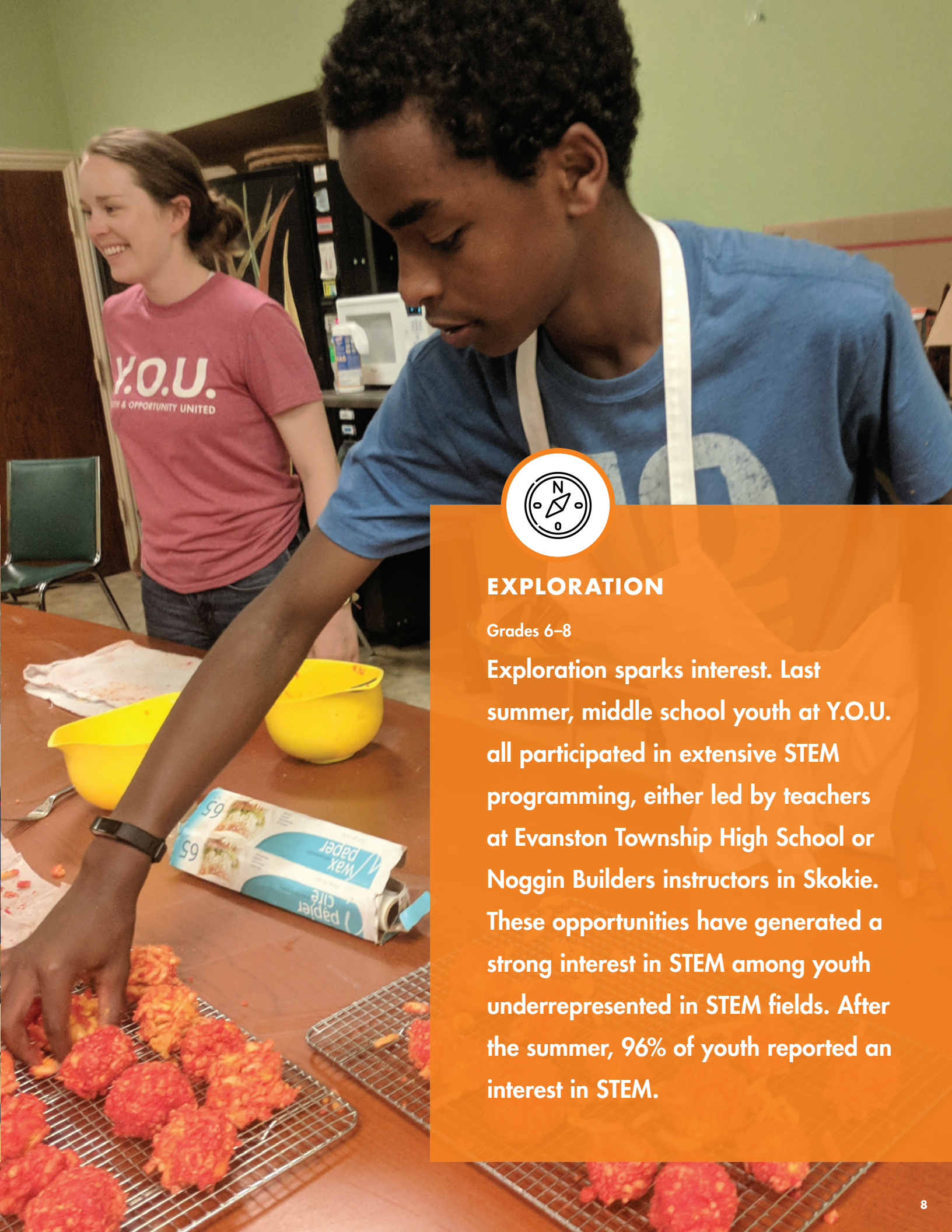
Community Conversations

In light of continued and highly publicized racial injustices and trauma, Y.O.U. expanded responsive conversations to a weekly virtual space for youth to openly engage in discussions on issues impacting their community. Youth requested an ongoing space to gather with staff and discuss racial justice, social unrest, intersectionality, and the role of the media. Youth self-identity, self-care, and agency were strengthened through these supportive dialogues.

Beatz 2 Me

Y.O.U. developed an innovative psychosocial group, which used music as a safe and non-confrontational means of expression. Youth analyzed lyrics and songs, using music to help youth develop positive ways of releasing fears, anxieties, and anger while simultaneously increasing self-esteem and empathy. Youth discussed how their self-image affects thinking, behavior, and relationships and how to develop positive relations with one's self and others.





EXPLORATION

Grades 6–8

Exploration sparks interest. Last summer, middle school youth at Y.O.U. all participated in extensive STEM programming, either led by teachers at Evanston Township High School or Noggin Builders instructors in Skokie. These opportunities have generated a strong interest in STEM among youth underrepresented in STEM fields. After the summer, 96% of youth reported an interest in STEM.



EXPERIENCE

Grades 9–12

Experience leads to success. Peer continues to demonstrate strong outcomes with 100% of youth who participate in the high school summer bridge project and Y.O.U.'s High School Program during 9th grade finishing 9th grade on track. This is a key indicator of future high school success. More than 95% of Peer participants reported confidence in their learning styles and their post high school goals.

HIGH SCHOOL

Y.O.U.'s High School Program centers on youth agency, identity, and relationships. Through experiential activities, youth develop real life skills, hone their problem solving and decision-making abilities, create learning spaces, and imagine future pathways.



SCHOOLS

Evanston Township High School

PROGRAM SPOTLIGHTS

Ready to Launch

Y.O.U.'s Ready to Launch/Senior Advisory propels high school seniors into college by supporting youth in finding the best college fit, preparing essays and applications, and accessing financial aid. Last year, four Y.O.U. program participants each received \$1,000 scholarships after enrolling in college.

Base Camp

Y.O.U. Makerspace's Base Camp worked virtually with youth over the summer on independent STEAM (Science, Technology, Engineering, Arts, and Math) projects. Youth researched and pitched project ideas, each receiving \$150 to obtain materials and develop their project. Staff worked with youth, providing tutorials as needed.

At the completion of summer Base Camp, youth presented final projects, sharing lessons learned and future plans. Projects included t-shirt design, furniture carpentry, and acrylic nail development. Experiences strengthened youth's technical skills and presentation abilities and fostered entrepreneurial thinking and problem solving.

RESPONSE TO THE COVID-19 PANDEMIC

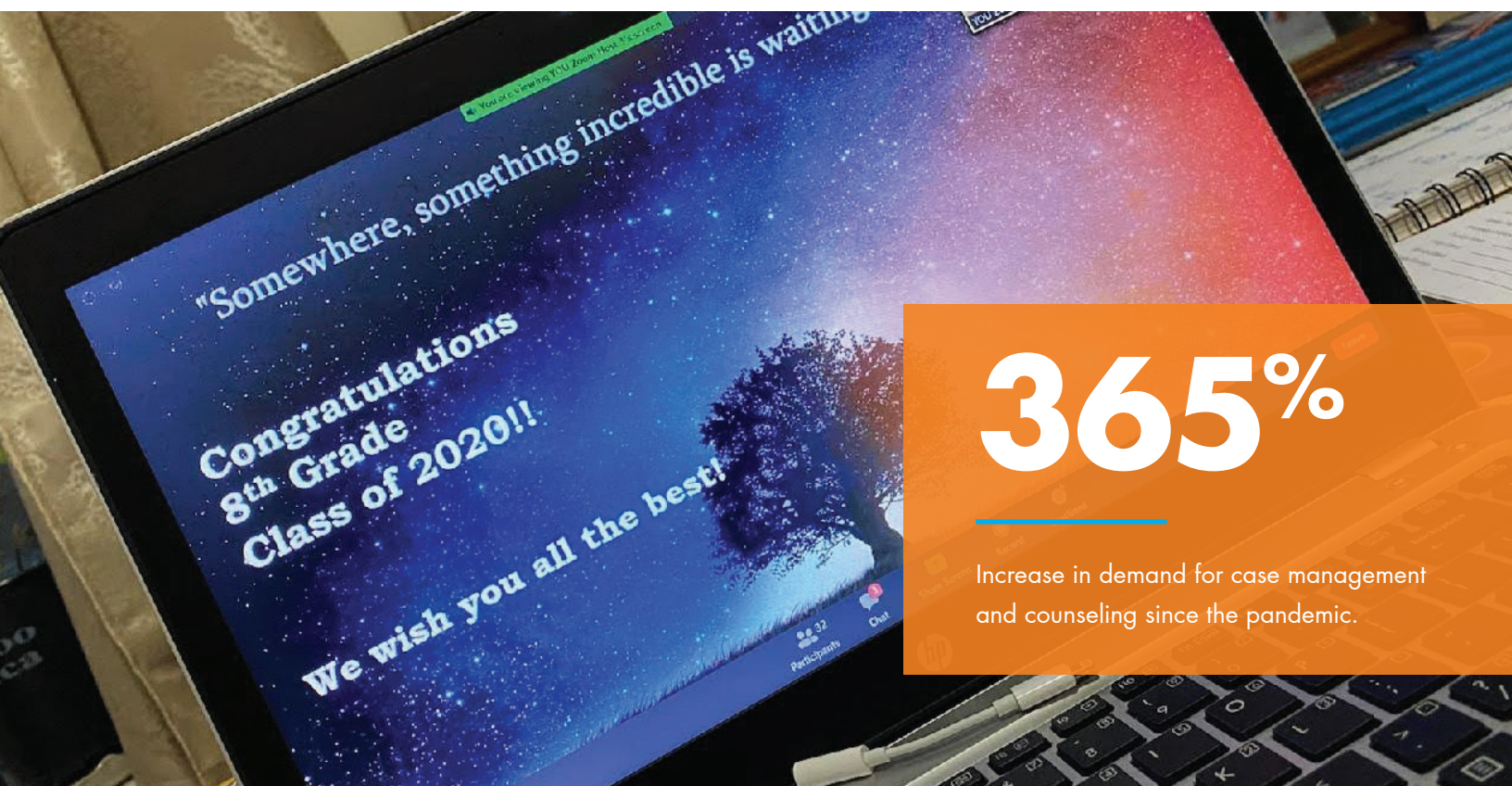
From the onset of the COVID-19 pandemic, Y.O.U. has continued to offer all programs and services, adapting and expanding in response to new and increased community needs.

With school closures, Y.O.U. quickly reached out to every family to assess immediate needs. Y.O.U. supported families with technology and the quick transition to remote learning.

Our Clinical Team helped families obtain public allowances and access resources while providing concrete basic needs support such as food, clothing, diapers, and transportation assistance. Y.O.U. also provided families with COVID-related safety supplies like masks and hand sanitizer.

Our OST Programs went virtual, supporting youth with remote learning, providing virtual spaces to gather with friends and staff to maintain connection, and infusing enrichment opportunities into days spent isolated at home.

Over time, Y.O.U. observed and addressed longer-term needs, including social connections, family mental health, and access to employment and health care resources. Y.O.U.'s Clinical Team worked to meet all of these needs, and OST staff creatively developed and implemented an innovative virtual summer program.





Y.O.U.'s Clinical and Community Services—always a vital component of our work—saw rapid and dramatic increases in demand. The need for extensive case management services for families in crisis grew alongside an increase in calls to our 24/7 youth housing crisis hotline. Responses to this hotline have continued without interruption.

Case management services provide for basic needs (food, transportation, clothing, diapers) and link families to critical community resources. There also has been a significant rise in individual and family counseling needs as youth and families experience anxiety, stress, and trauma from living through the dual pandemics of COVID-19 and racial injustice. Y.O.U. Youth & Family Counselors participated in pandemic-related training and are now Certified Clinical Tele-mental Health Providers and Certified Clinical Anxiety Treatment Professionals.

Over the summer, Y.O.U. partnered with Connections for the Homeless to provide life skills support, enrichment programming, and case management for middle and high school youth and their families in congregant living in Evanston.

“ During this hard time, Y.O.U. has been lifesavers with my daughter. Staff help with her homework and also they keep her mind busy and learning with all this new programming. I just want to say with all my heart: THANK YOU. Y.O.U program, you are a blessing.

Caregiver of Y.O.U. elementary youth

CLINICAL & COMMUNITY SERVICES

Y.O.U. expands access to resources that strengthen youth, families, and their communities.

Y.O.U. partners with local agencies and other non-profits, provides preventive services and emergency youth housing support, and fosters family education and engagement. Y.O.U.'s Clinical Services provide support to OST Programs. They include psychoeducational groups; individual, family, and group counseling; crisis intervention; case management; and caregiver support and engagement.

Y.O.U.'s Community Services support runaway and homeless youth and young adults ages 11-22. They include gateway and wraparound case management services, a 24/7 youth housing crisis hotline, street outreach and drop-in support, and referrals to our collective impact partners. Y.O.U. also runs community programs from our headquarters, primarily serving our 5th Ward neighbors. These events provide youth, as young as five years old, and families access to various enrichments, including culinary, STEAM, life skills development, financial literacy, and our 3rd Annual Code-a-Thon.

Y.O.U. Youth & Family Counselors provide counseling in English, Spanish, and Urdu among other languages.



HAPPENINGS AT 1911 CHURCH STREET



FOOD FARMING FUTURE (F³)

Y.O.U.'s beautiful and bountiful garden was not shut down by the COVID-19 pandemic. Y.O.U. staff, partners from The Talking Farm, and F³ youth leaders safely tended to the garden and harvested once a week throughout the summer and fall.

Each week, all F³ participants received no-contact deliveries of harvest baskets and recipes. Virtual F³ sessions including cooking classes and discussions of urban farming, the week's garden harvest, sustainability, and environmental justice. Summer F³ participants even created a cookbook of summer recipes and photos of their culinary creations.

CHEF Q AND COMMUNITY MEALS

When schools shut down in March due to COVID, Y.O.U.'s culinary partner, Chef Q. Ibraheem, began fielding calls from families in search of virtual cooking classes to keep their kids busy. During those conversations, Chef Q identified a rapidly growing need for families who recently had a disruption in income to access groceries and meals.

Y.O.U. opened its kitchen to Chef Q and her team, and, since March, more than 25,000 meals have been prepared and delivered to families to date in our community as a result of this collaboration!

DID YOU KNOW?

Y.O.U. hosted four repair clinics at our headquarters last year. Volunteers from We Build Community Evanston repaired and taught owners to fix bikes, appliances, jewelry, clothing, and more in an effort to reuse and reduce waste.

FINANCIAL REPORT

STATEMENT OF FINANCIAL POSITION AS OF 6.30.20

	FY20	FY19
Cash & Restricted Cash	2,702,349	2,318,313
Receivables, net of allowance	982,136	1,220,399
Facilities & Equipment	5,942,030	6,114,583
Endowment	2,605,958	2,598,373
Other Assets	53,605	53,935
TOTAL	\$12,286,078	\$12,305,603
Payables & Accruals	272,972	355,806
Unrestricted Net Assets	8,512,286	8,005,195
Temp. Restricted Net Assets	1,459,433	1,903,215
Perm. Restricted Net Assets	2,041,387	2,041,387
TOTAL LIABILITIES & NET ASSETS	\$12,286,078	\$12,305,603

STATEMENT OF FINANCIAL ACTIVITIES AS OF 6.30.20*

	FY20	FY19
Government	2,578,668	2,179,197
Contributions	1,479,669	1,761,458
Special Events	303,386	266,320
TOTAL REVENUE	\$4,361,723	\$4,206,975
Program Services	3,166,589	3,118,016
Management & General	712,258	565,190
Fundraising	378,584	357,634
TOTAL EXPENSES	\$4,257,431	\$4,040,840
OPERATING INCOME	\$104,292	\$166,135

* These results reflect total revenue less restricted endowment investment income.

OUR PARTNERS

Each year, Y.O.U. partners with a host of organizations to enhance program offerings, connect youth and families to additional community resources, ensure efforts are not duplicated, and work towards collective impact.

Tag You're It! introduced elementary youth to urban art and associated social messaging through exposure to graffiti-style street art. Through Y.O.U.'s partnership with Northwestern University, youth visited the Block Museum's Pop America exhibit, which portrayed societal issues through bold imagery.

Y.O.U. implemented a variety of hands-on STEM learning activities, including Spy Science Secret Agents in Training, through our partnership with the Museum of Science and Industry. Youth learned about codes and cryptography, scientific observation, and forensics, and discussed the ethics of using spy skills.

SCHOOL DISTRICT AND PUBLIC

City of Evanston
Evanston/Skokie School District 65
Evanston Township High School
District 202
Niles Township High Schools
District 219
Skokie School District 68
Skokie/Morton Grove School
District 69
Village of Skokie

COLLECTIVE IMPACT

Alliance to End Homelessness in
Suburban Cook County
Big Brothers Big Sisters
Bundled Blessings
City of Evanston's Youth and Young
Adult Division
Connections for the Homeless
Curt's Café
Erie Family Health Center

ETHS Health Center
EvanSTEM
Evanston Art Center
Evanston Cradle to Career
Evanston Local Area Network 40
Evanston Public Library
Evanston Scholars
Family Action Network (FAN)
Family Focus
Foundation 65
Illinois Caucus for Adolescent Health
Illinois Collaboration on Youth
Illinois Safe Schools Alliance
Infant Welfare Society of Evanston
James B. Moran Center for Youth
Advocacy
McGaw YMCA
Niles Township Local Area
Network 41
Northwestern University
Neighborhood and Community
Relations
Oakton Community College

OMNI Youth Services
PEER Services
Response for Teens
The Bridge Youth and Family Services
The Harbour, Inc.
Youth Job Center
YWCA Evanston/North Shore

OST PROGRAM PROVIDER

Art Encounter
Chef Q. Ibraheem
Chemistry in the Kitchen
Chicago Loves Dance
Common Threads Cooking
Daniel Williams (dance)
David Bond (culinary)
DIME (Dance Is My Everything)
Evanston Art Center
Evanston Public Library
Fitness Avenue
Full Package Athletics
George Folz Cartooning
Hot Shots Sports

Jeanne Lee (yoga)
Kumani Youth Programs
Matthew Talavera (fitness)
Mudlark Theater
Museum of Science and Industry
Next Level Martial Arts
Noggin Builders
North Shore Music
Northlight Theatre
Northwestern University:
Block Museum of Art
Poetry & Poetics
Oakton Community College
Open Studio Project
Overtime Athletics
Simeon Mladenov (volleyball)
Sticky Fingers Cooking
Summer Kelly (step)
The Recyclery
The Talking Farm
Yoli Maya Yeh (yoga)



DON BAKER CIRCLE FOR YOUTH

Named for our visionary founder and Director Emeritus Don Baker, the Don Baker Circle for Youth is a giving society established to recognize supporters who make annual fund contributions of \$1,000 or more to Y.O.U. We are grateful for this generous support.

Andy and Whitney Baker
Don and Patty Baker
Cathy Beres and Anton Valukas
Jim Blake
Linda Blakley
Sue and Paul Brenner
Gabrielle and Judson Brooks
C. Louise Brown
Sandra and Charles Brown
Sara and Bob Burson
Abigail Butkus
Al and Ellen Butkus
Noah and Erika Carey
Stuart Chanen and Julie Fenton
Gerry Cleary and Sarah Hanson
Cless Family Foundation
Marty and Kristin Cless
Hilary Cohen
Craig and Kate Collinson
Ann and Russ Covode
David and Julie Cutter
Linda and Alex Darragh
Kent and Liz Dauten
Laura Dell and Scott Blickenstaff
Dorothy and Harry Perkins Fund at
The Chicago Community Foundation
Elizabeth Beidler Tisdahl Foundation
Matthew English
Elizabeth Ester and Michael Brody
Finnegan Family Foundation
Evelyn Finnegan
Mary and Paul Finnegan
Rachel Fowler
Lucinda Fox and John Mancini
Francis Beidler Foundation
Frankel Family Foundation
Marya and Peter Frankel
Mimi Frankel
Steve Galler
Shelley Gates and David Kornhauser
Steve and Anne Gilford
Golden Family Foundation
Harry Gottlieb
Scott and Jennifer Gwilliam

Jim and Sue Hagedorn
Mark and Shelley Hall
Stuart and Susan Handler
Hanson Family Foundation
David and Gina Hill
Barb Hiller
Jack Hinz and Cate Whitcomb
Betsy and Donald Hohman
Laura Hohnhold and Andy Otting
Doug and Linda Honnold
Richard Hubbard, M.D. and Alaka
Wali
Pam and Robert James Jr.
John and Margaret Sagan Foundation
John H. Hart Foundation
Tom and Ann Ohlrogge Johnson
Michael and Rhoda Kamin
Suzanne and Dan Kanter
Tilden Katz and Katharine Baker
Carolyn and E. Gerry Keith
Karl Keller and Barbara Shwom
Chris and Sylvia Kite
David Kleiman
Jane Koten
Marti and George Lannert
Ross and Lori Laser
Lassman Family
Carolyn and Mike Laughlin
Leslie and Paul Lehner
Jennifer Simpson Leigh
Chuck Lewis and Penny Sebring
Peter and Rachel Lewis
David and Gretchen Livingston
Ruth Lovingood
Margaret and Paul Lurie
Shea and Nancy Lutton
Betty Mack
Jim and Laura Maloney
Letitia and Jeffrey Mann
Adele and Roland Martel
Martha Struthers Farley and Donald C.
Farley, Jr. Family Foundation
Reynold and Santrice Martin
David Marzahl and Anne Reusche

Rosa and Daniel McAndrew
Mark and Kathy McCarville
McLamore Family Foundation, Inc.
Judy Mendel and Jorge Kurganoff
Nancy Meyer
William Moller
Joseph Monaghan and Claire
Weingarden
Fran Morel and Kris Koenig-Morel
Lorena Neal and John Koski
Judy Newton
Tom and Cathy Omundson
Mary and Ben Page
Patrick G. and Shirley W. Ryan
Foundation
Nicki and Greg Pearson
Alex Piper and Jon Seed
Laura-Min Proctor and Matt Brejcha
Barbara Putta
Tracy Quattrochi and Neal Brady
Rene Bloch Foundation
Eleanor and Bill Revelle
Richard C. and Margaret V. Romano
Charitable Trust
Bart and Catherine Rocca
Phil and Mary Roden
Brent and Michelle Rogers
Ruth D. Rosin
Karin Ruetzel and Antony Burt
Shabnum and Sunil Sanghvi
Tim and Debby Schmid
Barbara Schwarz and Tom Klitzkie
Donald and Victoria Scott
Tom and Maryellen Scott
Leslie Shad and Joe Brennan
Rens and Deb Sherer
Evelyn Marks Siegel
Lynne and George Simon
Prabha and Anita Sinha
Rodger Sonneborn and Yvette Gideon
Katie Stallcup and Tom Mustoe
Jennifer Steans and Jim Kastenholz
Ann Stevens
Nancy and Barney Straus

Kent and Lora Swanson
The Lehman-Stamm Family Fund
Michael and Lene Thomas - The
Thomas Team
Laura Tucker and Pete Giangreco
Katie Tucker Trippi
Michael Turner and Janet Crawford
Jay and Jill Twery
Alice Tybout and Brian Sternthal
Jane and Howard Tyner
Leslie and Steve Warner
Weatherlow Foundation
Trinda N. Weaver
Gayle and Nancy Webber
Constance and Hugh Williams
Aisya Williamson
Cindy Wilson and Chip Peters
Steve and Sue Wilson
Chris and Janet Winslow
Margie Morrison Zivin and Mark Zivin

DONORS

Y.O.U. is grateful for our many generous donors in Fiscal Year 2020 (July 1, 2019 – June 30, 2020). Every effort is made to list donors accurately. We sincerely apologize for any omissions or errors in spelling.

\$100,000+

Anonymous
Mary and Paul Finnegan
Illinois Department of Human Services
Illinois Department of Public Health
Illinois State Board of Education
Lewis-Sebring Family Foundation
United Way of Metro Chicago
US Department of Health and Human Services

\$50,000+

City of Evanston Mental Health Board
Exelon
Frankel Family Foundation

\$25,000+

Cless Family Foundation
Finnegan Family Foundation
George R. Kendall Foundation
Adele and Roland Martel
Martha Struthers Farley and Donald C. Farley, Jr. Family Foundation
Paul M. Angell Family Foundation
Union Pacific Foundation

\$10,000+

Anonymous
Accuity
Jim Blake
Sue and Paul Brenner
Kent and Liz Dauten
Elizabeth Ester and Michael Brody
Evanston Community Foundation
Golden Family Foundation
Illinois Tool Works Foundation
Kenilworth Union Church
Ross and Lori Laser
Letitia and Jeffrey Mann
PurePoint Financial
Tom and Maryellen Scott
Kent and Lora Swanson
The Blowitz-Ridgeway Foundation
Steve and Sue Wilson

\$5,000+

Anonymous (2)
Linda Blakley
Dorothy and Harry Perkins Fund at The Chicago Community Foundation
Matthew English
Mimi Frankel
Mark and Shelley Hall
Doug and Linda Honnold
Illinois Tool Works
John H. Hart Foundation
Marti and George Lannert
Leslie and Paul Lehner
Peter and Rachel Lewis
Margaret and Paul Lurie
MacArthur Foundation Matching Gift Program

Magnetar Capital Foundation
McLamore Family Foundation, Inc.
Alex Piper and Jon Seed
Laura-Min Proctor and Matt Brejcha
Eleanor and Bill Revelle
Brent and Michelle Rogers
The Lehman-Stamm Family Fund
William Blair & Company Foundation
Cindy Wilson and Chip Peters
Woodward Charitable Trust Niles
Margie Morrison Zivin and Mark Zivin

\$2,500+

Andy and Whitney Baker
Don and Patty Baker
Gabrielle and Judson Brooks
Sara and Bob Burson
Abigail Butkus
CohnReznick
Laura Dell and Scott Blickenstaff
Evanston SPACE
Evelyn Finnegan
Francis Beidler Foundation
Peter and Marya Frankel
Becky and Steve Galler
Hagerty Consulting
Stuart and Susan Handler

Suzanne and Dan Kanter
David Marzahl and Anne Reusche
Judy Mendel and Jorge Kurganoff
Patrick G. and Shirley W. Ryan Foundation
Nicki and Greg Pearson
Tracy Quattrochi and Neal Brady
Ruth D. Rosin
Renslow and Deb Sherer
Michael Turner and Janet Crawford
Village of Skokie Community Development Block Grant
Leslie and Steve Warner
Chris and Janet Winslow

\$1,000+

Anonymous
Cathy Beres and Anton Valukas
Bramer Animal Hospital
C. Louise Brown
Sandra and Charles Brown
Al and Ellen Butkus
Noah and Erika Carey
Stuart Chanen and Julie Fenton
Gerry Cleary and Sarah Hanson
Marty and Kristin Cless
Hilary Cohen
Craig and Kate Collinson
Ann and Russ Covode
David and Julie Cutter
Linda and Alex Darragh
Edward Jones
Elizabeth Beidler Tisdahl Foundation
Evanston Community Bank & Trust
Rachel Fowler
Lucinda Fox and John Mancini
Shelley Gates and David Kornhauser
Steve and Anne Gilford
Scott and Jennifer Gwilliam
Jim and Sue Hagedorn
Hanson Family Foundation
David and Gina Hill
Barb Hiller
Jack Hinz and Cate Whitcomb
Betsy and Donald Hohman
Laura Hohnhold and Andy Otting
Richard Hubbard, M.D. and Alaka Wali
Pam and Robert James Jr.
John and Margaret Sagan Foundation
Tom and Ann Ohlrogge Johnson
Michael and Rhoda Kamin
Tilden Katz and Katharine Baker
Carolyn and E. Gerry Keith
Karl Keller and Barbara Shwom
Chris and Sylvia Kite
David Kleiman
Jane Koten
Lassman Family
Carolyn and Mike Laughlin
Jennifer Simpson Leigh
David and Gretchen Livingston
Ruth Lovingood
Shea and Nancy Lutton
Betty Mack
Jim and Laura Maloney
Reynold and Santrice Martin
Rosa and Daniel McAndrew
Mark and Kathy McCarville
Nancy Meyer
William Moller
Joseph Monaghan and Claire Weingarden
Fran Morel and Kris Koenig-Morel
Lorena Neal and John Koski
Judy Newton
North End Mother's Club
NorthShore University Health System
Northwestern University
Tom and Cathy Omundson
Mary and Ben Page
Barbara Putta
Rene Bloch Foundation
Richard C. and Margaret V. Romano Charitable Trust
Robert R. McCormick Foundation
Bart and Catherine Rocca
Phil and Mary Roden
Karin Ruetzel and Antony Burt

Shabnum and Sunil Sanghvi
 Tim and Debby Schmid
 Barbara Schwarz and Tom Klitzkie
 Donald and Victoria Scott
 Leslie Shad and Joe Brennan
 Evelyn Marks Siegel
 Lynne and George Simon
 Prabha and Anita Sinha
 Rodger Sonneborn and Yvette Gideon
 Katie Stallcup and Tom Mustoe
 Jennifer Steans and Jim Kastenholz
 Ann Stevens
 Nancy and Barney Straus
 The Brown Team at Baird & Warner
 Michael and Lene Thomas - The
 Thomas Team
 Katie Tucker Trippi
 Laura Tucker and Pete Giangreco
 Jay and Jill Twery
 Alice Tybout and Brian Sternthal
 Jane and Howard Tyner
 Weatherlow Foundation
 Trinda N. Weaver
 Gayle and Nancy Webber
 William Blair & Company Charitable
 Matching Gifts Fund
 Constance and Hugh Williams
 Aisya Williamson

\$500+

Anonymous
 Arch Insurance Group Inc.
 Joan Babbitt
 Steve and Maria Ballantyne
 Sheryl and Stopher Bartol
 Tiff and Joe Beatty
 Ralph Beck and Elizabeth Goodbody
 Susan Berkowitz and Marc Beem
 Anne and Bill Bevan
 Derrick Blakley
 Steve Bogira and Jane Neumann
 Steve Bowen
 Bruce and Beth Boyd
 Tom and Debbie Brejcha
 Tim and Vickie Burke
 Debora de Hoyos and Walter Carlson
 Deborah and Gary DeFilippo
 Julianne and Mark Dieterich
 Jane and Dave Doyle
 Pam and Jim Elesh
 David and Sheila Fenn
 Gary and Holly Fisher
 David Foster and Melissa Wynne
 Doretta Fuhs
 Coley Gallagher and Brian Heckler
 Nancy and Nick Giampietro
 Cynthia Gonzalez and Jeffrey Latin
 Stephen Goranson
 Mary Ann and David Grumman

Kathy and Jim Hardgrove
 Carol and John Henes
 Dr. James Hill and Sandra Hill
 Steve and Meghan Hoxmeier
 Anne Jacobson and Rick Kolsky
 Catherine Kallal and Maurice Lemon
 Wendy Kaplan and Steve Haack
 Debra Kinney and Jason Howard
 Grace and Richard Lehner
 Janice Liten and Mike Schnur
 Leslie and Chad Luning
 Jackie Mack
 Una D. Malkinson
 Mark and Nancy Mathyer
 Gregory Miller and Edith Chen
 Kevin Mott
 Old World Industries, LLC
 Denis and Martha Pierce
 Allison Pink and Rich Owen
 Dan Pinkert and Freddi Greenberg
 Tom Pitt and Sheila Merry
 Kenneth and Polly Rattner
 Robert and Patty Reece
 Gabe and Beth Rodriguez
 Ian and Sheau-ming Ross
 Tony and Jane Rothschild
 Holly Ruch-Ross and Tom Ross
 Richard Rykhus and Carlos Briones
 Scott Byron & Co.
 Kathy Shaw and Pat Mulhern
 Erik Snapp and Catherine Brubaker
 Ingrid and William Stafford
 Rhonda Stein and Ed Smolevitz, MD
 Jason and Casey Swanson
 Thomas and Sue Swigert
 Susan TePas
 Mark and Lynn Thomas
 Laura Tilly and Derek Cottier
 Hon. Elizabeth Tisdahl
 David and Carolyn Utech
 Matt and Sarah Walsh
 Amy and John Ward
 Weiner Ellman Foundation
 Jane and Jeremy Wilson
 Joan and Robert Yohanan
 Milt and Michelle Zimmerman

\$250+

Barry Alberts
 A. Louis Allred
 Karl Androes and Jean Clough
 Martha and Paul Arntson
 Emily Azari
 Yolanda and Fabricio Balcazar
 Carol Barnett
 Marsha Barnett and John McKnight
 Nick Bothfeld and Elizabeth Brown
 Roger Boye
 Rob and Gail Bush

Susan Canter
 Marcus and Jean Casady
 John and Jane Chapman
 Daniel and Candance Chow
 Gloria Bond Clunie and Basil Clunie
 Barbara and Michael Davis
 Neil Donovan and Ellen Shriver
 Beth and Harry Drucker
 Jim and Joan Ducayet
 Carol and Howard Ellegant
 Paul Embree
 Matthew English IV and Marcus
 Leonard
 Leota Ester
 Jean and Andy Fies
 Caitlin Fitz and Seth Green
 Earl and Julianne Fitz
 Jory Fitzgerald
 George and Ellen Galland
 Galler Family Foundation
 Sarah Garber
 Chris Gibbons
 Kathy Grady and Victor Grimm
 David and Lizzie Graham
 Arny Granat
 Paul and Rosalie Greenberger
 Roy and Colleen Grober
 Jody Garber Gross
 Larry Grote
 Geoff and Ginny Harlow
 Carole J. Henry
 Karen Jared
 John J. Cahill, Inc.
 Marla Johnson
 Jeffry and Sandra Jurs
 Colleen Kaferly and Benjamin Kite
 Dan and Bekki Kaplan
 Barbara Keeley
 Horton Kellogg
 Eamon Kelly and Lakshmi Lakshmanan
 Kiwanis Club of Evanston
 Peter and Shirley Dugdale Laundry
 Carolyn Lickerman
 Jean Lieberman
 Daniel James Lithio
 Dave and Catherine Lynch
 Bonnie and Jay Lytle
 Gwen Macsai and Paul Goren
 Blake Magnuson and Colette
 Halverson
 Andrea Mainelli and Alex Schultheis
 Mr. and Mrs. R. Mark McCareins
 Jim and Cass McHolland
 Julie A. McWilliams
 Margo Morris and Stanley B. Tamkin
 Susan B. Munro
 Fred and Dorothy Nagelbach
 Dan and Diane Neal
 Charles Nelson

Elizabeth Patterson and Michael
 Hermsen
 Judith Pevarnik
 Gary Price
 Betsy Quinn
 Judy and David Schiffman
 Renee Schleicher
 Stacy Schultze
 Melvin Schwartz and Lisa Yaremko
 Margaret Shaklee and Hillis Howie
 Maura Shea and Jim Mavros
 Joan and Bruce Sherman
 Gerri Sizemore
 Rick and Meg Slayton
 David and Lori Soglin
 Mary H. Sotir
 Hal Sprague
 Mark and Catherine Steege
 Joel and Kai Sternstein
 Susan and Stephen Stroh
 William and Jennifer Suvvari
 Carrie and Chris Swan
 The Kellcie Fund
 Andrew Thomas
 Bonita and David Turner
 Steve Warner and Anne Heider
 Nan Warshaw
 Bonnie Weller
 Valerie and Robert Weiss
 Karen and Norman Werd
 Emily and Randy Wexler
 Ann Whitney
 Andi and Rick Wich
 Jo Ann Wilkin
 Brad Woodman and Lisa Schilling
 Jan and James Zeller

\$100+

Anonymous (5)
 Allstate
 Allan Alson and Sue Ann Glaser
 Amazon Smile
 Trent Anderson
 Percy Angelo and Marvin Medintz
 Diana and Lee Austin
 Virginia Ayers
 Katie and Wynn Bailey
 Ann and Dave Baker
 Mr. and Ms. John N. Balch
 Rick and Elizabeth Bald
 Sunny Balsam
 Kalyani Banerjee
 Joyce Bartz and Martin Gartzman
 Marilee Bass
 Preston Bateman
 Jonathan and Bonnie Baum
 Marcia Baum
 Gershon and Suzanne R. Berkson
 Phyllis Bird

Jenny and Dave Blickenstaff	Kirk and Kim Hoopingarner	Andrew C. Porter	\$1+
Penny Block	Sandy Hubbard	John and Susan Powell	Anonymous (2)
Anna Bookstegen	Sally and Thomas Jacob	Carol Prieto	Hank Adams
Beth and Tom Borst	Jon and Faith Jacobson	Stephen and Susan Prout	Todd Adams
Jon and Mary Kay Bottorff	Gary and Susan Johnson	Bronwyn Rae and Kenneth Alder	Norma Adler
Kate and Chip Brady	Janelle and Rochelle Joseph	Audrey Reynolds	Susan Agate and Michael Slutsky
Bright Promises Foundation	Sibyl R. Josephson	Paul and Pam Rolfes	Judith A. Akers
Patti and Chuck Carrington	Cheryl and Mark Kaplan	Mark Rosenbaum and Mary-Ann Wilson	John Alsterda and Holly Greenhagen
Jill Carter	Claudio Katz and Sono Fujii		William and Carolyn Anthony
Josh and Julie Chernoff	Patrick and Lauren Keenan-Devlin	Drs. Sue and Vin Rosenthal	Bank of America Matching Gifts
Judy Chiss and Bernard Cohen	Judy and Bob Kemp	Tom and Barbara Rosenwein	Patricia Barber
Fay Clayton and Lowell Sachnoff	Matthew and Leigh Kennelly	Leonard Rubinowitz	Meredith Bechtel
Jeanne Cleveland and Steve Bernstein	Gaye and Phil Kenny	Bernd and Sandra Ruckdaeschel	Terry Cunningham Beem
Thomas and Shirley Conley	Bella J. Kim	David and Judith Saunders	Jill B. Berkeley
Robert and Isabel Curley	Peggy Morrison Kirsner	Susan Schaffrath and Jim Lindholm	Macon and Michael Blyth
Eric Davis	Wendy Kopald and Chuck Silverstein	Sara and Horst Schastok	Peter and Judy Bordwell
Stephanie Davis and Bradley Dunlap	Becky and Jeff Kremin	Margaret and George Schatz	Greg Bork Jr.
Chris de Brauw and Tracy Teweles	Carol Kriekard and Stephen Armstrong	Janet Schumacher	Bruce H. Boyer, Ph.D.
Luke and Shannon DeCock	Roger Kushla	John and Ann Searles	Jan and Ron Braeutigam
Glynis and Daniel Doyle	Lassman Family Limited Partnership	Ralph and Nancy Segall	Ray and Sheila Brand
Susan and Edward Dublin	Suzanne Lefevre and Tom Lenz	Joan Sextro	Gretchen Brewster
Jonathan and Sue Dunmore	James and Diane Lequar	Joan M. Sherman	Harry and Betty Brugger
Noreen Edwards and Mark Metz	Louisa and Nelson Levy	Stuart and Leslie Shulruff	Pam Butterfield
Daniel and Nancy Engel	Roy and Cheryl Lilly	Kathy and Robert Slaughter	Catherine Cadet
Jerry and Ellen Esrick	Janet Lutz	Helen LaPat Smith	Barb Caines
Al Farbman	Phyllis I. Lyons	Mike Snipes	Helen Carlock
Edward Feldman	Jessie Macdonald	Mary Anne Snyder and Roger Yount	Tim Carnahan
Issac and Niki Fernandez	Kevin Mack	Damian Solis	Jane Cassidy and Rick Dienesch
Susie and Marty Fine	Geraldine Macsai	Oehme and Winslow Soule	Marcia Caulkins
First United Methodist Church	Margaret and Gordon Mallett	David Spitulnik and Diana Cohen	Robert and Lynn Clark
Mark and Kathy Fisher	Daniel and Lynne Mapes-Riordan	Julie Strauss	Ann S. Cole
Jenny and D'Angelo Fletcher	Terri Mascherin and Tom Abendroth	Susan and Matthew Struve	Danielle Courrier
Daniel Forden	Adam and Kathy McGaughy	Heather and John Sweeney	H. Jacqueline Crane
Julie and Jeff Forgash	Kim McGuire	William C. Tempelmeyer	Janalee and Jim Croegaert
Katie and Tom Foust	Ann and Tom McMahon	Larry and Edna TerMolen	Denny and Julie DeCock
Kathryn and Alan Freemond	Bennett and Diane Melnick	Susan and Jim Thompson	Nick and Kate DeCock
Patricia Froh	Mark Miller and Anita Weinberg	Kathy Tisdahl	Harvey and Barbara Dershin
Sarah Frudden and Jeff Bergman	Victor and Jeanne Monty	Elinor Turbov	Ruthanne DeWolfe, Esq.
Bill and Beth Geiger	Mary and Douglas Moring	Joan E. Waggoner	Mert and Carol Drake
Edwin Getz and Terri Drews	Nonie Morris	Linda and Craig Walker	Natalie and Joshua Dranoff
Giella Family	Carol Mullins	Terry and Jan Walsh	Tobi Ehrenpreis and Robert Nachman
Ellen and Jeff Gilbert	Mike and Sarah Muyres	Clarence and Wendy Weaver	Pamela Hein Eisfelder
Bill Glader	Suzanne and Jim Nelson	Richard and Karen Weiland	Sharon Ephraim and David Kite
Barbara Goodman and Seth Weinberger	Steve and Kate Newman	Ray and Mary Anne Wexler	James and Karen Erickson
Christopher Gotschall	Anthony and Andrea Nocchiero	Mr. and Mrs. Eric Wicks	James and Rosemary Etter
Jonathan Greene	Wendy Oldeen	Ben and Donna Wolf	Facebook
Dale and Ava Greenwell	Stuart and Sarah Opdycke	Cheryl Wollin	Sheran K. Fiedler
Lydia Halverson	Daniel and Trina Orbach	Sally Sandberg Wood	Tessa Fischer
Thomas and Maureen Hanrahan	Amy Paller and Etahn Cohen	Bob and Carol Wooldridge	Priscilla A. Florence
James and Laura Hansen	Jeffrey and Martha Pattee	Matthew Wray	Robert Fourer
Brian Hanson and Karen Alter-Hanson	Saralyn Peritz and Howard Shidlowsky	Melanie and Paul Wright	Steve and Cindy Franklin
John and Alison Harper	Ben and Katie Perry	David Zarefsky	Sid and Jackie Freedman
Jeff and Jennifer Harris	John and Jane Peterson	Liliana Zecker	Arthur and Julie Friedman
Jane S. Hawley	Robert and Carolyn Phelan	Jake Zivin	Elliot and Tamar Frolichstein-Appel
Peter and Sheila Hebein	Terry and Nancy Phillips		Andy Galler
John and Anne Heinz	Joan and Bruce Pikas		Linda Gardner
Claire Hiller	Amanda Porta		Geoff and Judy Gluck
			Sally Goren
			Jeffrey and Suellen Grassle

Rob and Linda Grierson
 Kelsey Gross
 Sandy and Eston Gross
 Bill and Lois Grusich
 Steve Harp and Nancy Burke
 Robert Harper and Wendy Miller
 John and Rachel Heuman
 Chris and Elizabeth Hogan
 Ling-Chi Huang
 Greg and Terri Hummel
 Jacobs Family
 Ronna and Les Jacobson
 Madeleine Jaffe
 Larry and Linda Jones
 Leonard Joy and Suzanne Sawada
 Linda and Abe Kahan
 Ada P. Kahn, Ph.D
 Michael Kennedy
 Eugene Kim
 Jin-Soo Kim and Shayle Miller
 Jo Ann C. King
 Kosinski Family
 James Kratz
 Keith and Valerie Kretchmer
 Jen and Keith Kreuser
 Margaret Krulee
 The Krupkin Family
 Bob and Marian Kurz
 Robert A. Lamb
 Jen Lauer
 Paul Lehman and Ronna Stamm
 Tamara and Arnold Levin
 Laurie and Fred Levy
 Robert and Joan Linsenmeier
 Ellie and Chuck Logan
 Jean Luft and Kevin McCaffrey
 Hani and Millicent Mahmassani
 Alice McAvoy
 Sheila McCarthy and David Daskovsky
 Patrick and Rita McCourt
 Eleanor Merar
 Joel and Greta Michael
 R. Michaelson
 Krysta Michorczyk
 Kathleen Miller
 Arlene Michaels Miller, Ph.D.
 Ben and Amy Milner-Gorvine
 Mark S. Mizell
 Marjorie Mizes
 Marianne and Tom Moberly
 Bill Neilson
 Elizabeth Nichols
 Lori Osborne
 Earl and Sylvia Payne
 Diane Peachin
 Art and Carla Kenney Phillips
 Barbara Rabyne and Nicolai Schousboe

Marc and Wendy Raven
 Bob Regan and Cindy Clark
 Edward and Sharyn Reiff
 Marsha Richman and Richard Lanyon
 Gene and Jane Ring
 Julie and Felipe Rivera
 Donald Rogan
 George and Mary Rosic
 John and Joan Rudnicki
 Judith Ruhana
 Joi and Tim Russell
 S&C Electric Company
 Monica and Brad Sageman
 Sue and Tim Salisbury
 Dr. and Mrs. S. Shulman
 Louis and Eleanor Skydell
 Gary Slutsky
 Tim and Maret Sonder
 Sanford and Janet Stein
 Robert and Jane Stevens
 Dave and Denyse Stoneback
 James Tran
 Dennis and Lois Trautvetter
 Ruth C. Uchtman
 Michael and Betsy Waller
 Susan Warner and Ann Ballard
 Irwin Weil
 Lenore Weissmann
 Blair Wellensiek and Karl Peters
 Fred Wellisch and Edie Canter
 Henry Wilkins
 Peter and Mary Wyler
 Marianne Zelewsky
 Barbara Zimmer

IN-KIND DONORS

Apelian Carpet & Orientals
 Arlington International Racecourse
 Bagel Art Cafe
 Belgian Chocolatier Piron
 Linda Blakley
 Blick Art Materials
 Sue and Paul Brenner
 Brothers K Coffeehouse
 Sandra and Charles Brown
 Campagnola
 Chicago Bulls
 Cinemark Theatres
 Marty and Kristin Cless
 CycleBar Evanston
 Dance Center Evanston
 Dave's Down to Earth Rock Shop
 EGEA The North Shore's Wellness Spa
 Elizabeth Ester and Michael Brody
 Evanston SPACE
 Farmhouse Evanston
 Mary and Paul Finnegan
 Peter and Marya Frankel

Good's Of Evanston
 Deborah Greenberg
 Harris Theater for Music and Dance
 Harlan Heiber
 Hewn
 David and Gina Hill
 Kevin and Carrie Teborek - Etown Fitness Club
 Koi Fine Asian Cuisine
 Olivia Kuncio
 Marti and George Lannert
 Laugh Factory Chicago
 Leslie and Paul Lehner
 Peter and Rachel Lewis
 Steven Lubet and Linda Lipton
 Lucky Platter
 Adele and Roland Martel
 Catherine Martin
 Brad May
 Meliora K
 Music Box Theatre
 Music of the Baroque
 Music Theater Works
 North Shore Distillery
 Oceanique
 One River School
 Oscar Isberian Rugs
 Patisserie Coralie
 Nicki and Greg Pearson
 Peckish Pig
 Pilates Connection
 Pita Inn
 Betsy and John Sagan
 Smylie Brothers Brewing Company
 Mahalia Sobhani
 Swantiques
 Temperance Beer Company
 The Actors Gymnasium
 The Barn Steakhouse/Found Kitchen
 The Joffrey Ballet
 The Second City
 The Wine Goddess
 Trattoria D.O.C.
 Trattoria Demi
 Union Pizzeria
 Patty Valkanas
 Vinic Wine Co
 Gene Weisskopf
 Wheel & Sprocket
 Cindy Wilson and Chip Peters
 Wines for Humanity
 Matthew Wray
 Zanies Comedy Club
 Margie Morrison Zivin and Mark Zivin

MATCHING GIFTS

Allstate
 Arch Insurance Group Inc.
 Bank of America Matching Gifts
 Facebook
 MacArthur Foundation Matching Gift Program
 Robert R. McCormick Foundation
 William Blair and Company
 Charitable Matching Gifts Fund

HONOR GIFTS

In Honor of Don Baker

Janet Lutz

In Honor of Hazel Barnett

Carol Barnett

In Honor of Ross Bricker

Cathy Beres and Anton Valukas

In Honor of Al and Ellen Butkus

Glynis and Daniel Doyle

In Honor of Mary Finnegan and Nicki

Pearson

Marianne and Tom Moberly

In Honor of Caitlin Fitz and Seth Green

Earl and Julianne Fitz

In Honor of Mimi and Bud Frankel

Chris and Elizabeth Hogan

In Honor of Megan Garrad

Jill Carter

In Honor of Shelley Gates

Janet Schumacher
 Andrew Thomas

In Honor of Jonathan Gewurz

Henry and Anita Gewurz

In Honor of Barb Hiller

Claire Hiller

In Honor of Kat and Andrew's Wedding

Eric Davis

In Honor of Horton Kellogg

Don and Patty Baker

In Honor of Kevin, Jari, Justin, Camden, and Kinley

Eugene Kim

In Honor of Bella Kim

Greg Bork Jr.

In Honor of Jim McHolland

Gloria Bond Clunie and Basil Clunie

In Honor of Jackie Quern

Patrick G. and Shirley W. Ryan
 Foundation

In Honor of Casey Varela

Gretchen Brewster

In Honor of Cindy Wilson

Bruce and Beth Boyd

Stuart Chanen and Julie

Fenton

Gabe and Beth Rodriguez

In Honor of James

Zeckhauser

Edward and Sharyn Reiff

In Honor of Margie Morrison

Zivin

Deborah and Gary DeFilippo

Jackie Mack Closing

Commission Donations

Shelley and Geoff Baird

Kevin Boyd

Molly Champagne

Katharine Egan

Ed and Kelsey Gross

Mark Ingraham

Hilary Logan

Jonakan O'Steen and Miguel

Hernandez

Brad and Valerie Sokola

MEMORY GIFTS

In Memory of Pat Barnes

Nick Bothfeld and Elizabeth

Brown

McLamore Family

Foundation, Inc.

Sally Sandberg Wood

In Memory of Cheryl

McDonald

Jay and Jill Twery





2019-2020 BOARD OF DIRECTORS

Jim Blake	Kevin Mott
Linda Blakley	Tracy Quattrochi
Abigail Butkus	Michael Turner
Marty Cless	Clarence Weaver
Matthew English	Aiisa Williamson
Elizabeth Ester	Matthew Wray
Mary Finnegan	
Marya Frankel	Cindy Wilson, President
Shelley Gates	
Richard Hubbard	
David Hill	
Leslie Lehner	
Peter Lewis	
Kevin Mack	
Letitia Mann	
Adele Martel	
David Marzahl	

2019-2020 ASSOCIATE BOARD

Jonathan Baum
Sue Brenner
C. Louise Brown
Sandra Brown
Al Butkus
Mark Hall
Barb Hiller
Betsy Hohman
Eamon Kelly
John Koski
Marti Lannert
Paul Lehman
Nicki Pearson
Betsy Sagan
Tom Scott
Margie Morrison Zivin

2020 EXECUTIVE TEAM

Craig Lynch Chief Executive Officer	Dave Studenmund Interim Chief Financial Officer
Jennifer Simpson Leigh Chief Advancement Officer	Em Wilder Director of High School OST Programs
Megan Orleans Director of Grades 3-8 OST Programs	Donald A. Baker Founder and Director Emeritus
Melody Rose Director of Clinical and Outreach Services	

Front cover photo credit: The Block Museum of Art, Northwestern University.

Interior and back cover photo credits: Olivia Tsotsos and The Block Museum of Art, Northwestern University.